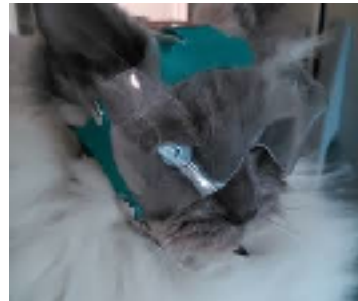


# OPTIVIZOR EYE AND FACIAL PROTECTION - FITTING -





# IMPORTANT FITTING GUIDELINE

---

Animals want to understand and we as pet owners we know they do! We also are guilty of sometimes forgetting to explain something new to them and end up causing some preventable issues.

## **A FREQUENTLY KNOWN PROBLEM - PET LINK OPTIVIZOR TO PAIN**

Our customer will get their dog the Optivizor, and either after surgery or during the fitting, the dog's first logical reaction is 'DEFENSE'!

A dog that wakes up from anaesthetic, is in pain, and if the first time they are wearing the Optivizor on their head is after surgery, they can easily think "This new mask is to be blamed for my new pain - so if I tear it off, the pain will stop!"

They will probably have this same thought for a few days, especially when the dog also is blind and does not see what happens.

## **LINK OPTIVIZOR TO POSITIVE EXPERIENCE**

- Before the first fitting, give your dog time and let them sniff and rub their face against it.
- Always tell a blind dog what you're doing!
- Put on the Optivizor on the head without using the straps and immediately give a treat. Only keep the Optivizor for 2-3 seconds and remove. Making it into a play shows them that it is not nothing to be afraid of.
  - Blind dogs: Remember that their senses are heightened so they can feel something is on their head.
- Repeat the above until dog is use to the feel of the Optivizor on its head and looking through it, and then only then start fitting the Optivizor to your dog
- If possible, put the Optivizor into the dog's bed, so that he/she can gets used to it.
- Praise them and tell them how smart they look
- If your dog does look into mirrors normally, try to have the dog see itself in the mirror wearing the Optivizor.
- And don't forget to give them their favourite treats as a reward for their cooperation!



OPTIVIZOR EYE AND FACIAL PROTECTION	1
- FITTING -	1
IMPORTANT FITTING GUIDELINE	2
FITTING CRITERIA	4
FREQUENTLY ASKED QUESTIONS	6
SPECIFIC FAQ FOR SHORT SNOUT	13

## FITTING CRITERIA

Optivizor must have a snug fit, not wobble or shuffle; otherwise it is too big!

If your dog is very active and moves their head a lot, the Optivizor won't slip off and does not slide down onto the shoulders of dogs with long necks when the fit is snug.

**IMPORTANT!** When fitting the Optivizor on your dog for the first time, make sure it is closed tight enough around the neck so the dog can not slip it off to the front! Remember - if he/she succeeds once, they will try it again and again...

### HEADREST

The headrest sits just above the eyebrows (or at the most, middle of the forehead). The colored side strips are below the eye level and also leave enough space under the ears. "Ideal Tip": Though not always possible, the upper "edge" / curvature of the Optivizor would run in parallel with the top of the nose.



The colored headrest should conform against the forehead.

- Optivizor too small?? If so, you will see the coloured headrest does not follow the shape of the dog's head, there is a hollow space between the head and the headrest.
- Optivizor too big?? If so, you will notice it slides from side to side.



### CHIN STRAP

The chin strap is not supposed to sit tight, but only ensures that the mask forms well around the face without restricting it.



### NECK STRAP

At the beginning and until the dog gets used to the Optimizor, the neck strap around the neck should be firmly closed. A finger may still fit in between, otherwise skillful (aka Houdini) dogs can manage to take off the mask. If/when they have gotten used to and accepted it (which shouldn't take long at all), the strap may be slightly loosened.



### EAR OPENING

- In front of the ears, the PVC leaves enough space so that there is plenty of ventilation and airflow. This also eliminates the concern of overheating.
- The colored collar needs to leave enough space between, behind and under the ears.



### SIDESTRAP

The side strips have to be put through at least TWO of the existing slots and should always end on the outside (see photo). You should "weave" the side strip through the slots when the Optimizor is very heavily used. Also, if your dog has a very broad head or neck, you may need to end the side strip in the second or third slot (vs. fourth) to help ensure a proper fit.



### LENGTH (FOR NORMAL AND LONG SNOUT DOG)

The Optimizor can be shortened to leave the the nose exposed (see dotted line) for dogs that need eye protection only.





## FREQUENTLY ASKED QUESTIONS

### 1. THE CHIN CLOSURE IS TOO SHORT

In case the chin strap is too short (i.e. because the dog has particularly large lips; or if the Normal Snout Optimizor was applied on a dog like a Bulldog), replace the strap with a string (a shoelace, a bow tie, a cord or - which is very ideal - a piece of gauze bandage twisted "to the sausage") put through the eyelets and tie it. The chin buckle should not be tight. It only serves to keep the Optimizor in the correct fit and to be removed for easy access to the eye to apply the medication.



### 2. THE OPTIVIZOR GETS FOGGY

An Optimizor that isn't properly shortened often rests on the tip of nose. This can block ventilation and lead to undesirable fogging. If fogging is unavoidable, we recommend the use of environmentally friendly anti-fog sprays. (see question 3).

### 3. THE OPTIVIZOR IS TOO LONG OR REST ON THE NOSE

This will cause the Optimizor to fog. The Optimizor should end between the nose and fur. The mask should hover over the nose and NOT lie on it. Otherwise it should be shortened (see next question).

Correct



## Incorrect



## **4. HOW DO I TRIM THE OPTIVIZOR?**



While wearing his/her Optivizor make them lie down on their belly with their head on or between their paws. You can now see where it has to be shortened. The Optivizor should end at the beginning of the nose - that is, where the nose ends and fur begins (in this photo: cutting the innermost pre-cut ring)

We recommend allowing your dog to wear the Optivizor for a while to ensure the fitting has settled before trimming the visor because cutting is permanent.

You can trim the Optivizor with a pair of scissors and smooth out any edges and unevenness with a nail file or fine sandpaper.

If the mask hovers too high above the nose and the sides are too short to be shortened



Trim off where the red line is.

The Optimizor still rests on the nose despite shortening

There are two options

Option 1: Reduce the side strips one position back.

Before

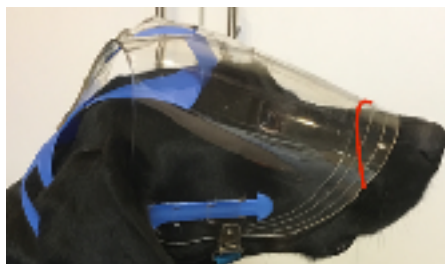
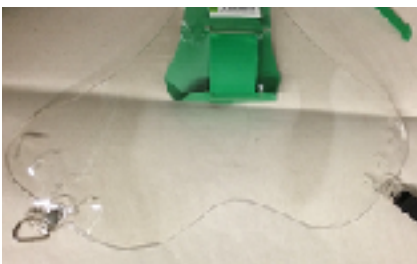


After



Option 2: Cut out a semi circle above the nose

This is only possible if the dog has a longer muzzle. After cutting out the "wave", the edge of the mask is still far enough away from the eye:





#### **5. THE SIZE IS CORRECT ACCORDING TO CHART BUT THE NECK IS TOO THICK.**



If your dog has a very broad head or neck, you may need to end the side strip in the second or third slot (vs. fourth) to help ensure a proper fit.

#### **6. THE OPTIVIZOR IS SLIDING FROM SIDE TO SIDE**

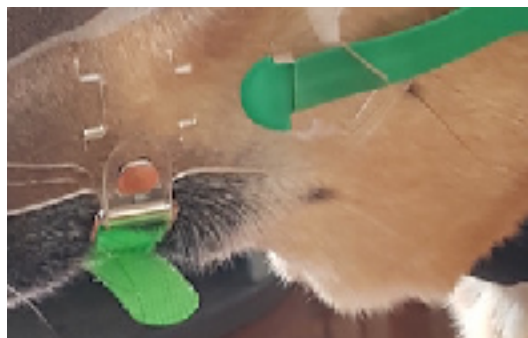
The Optivizor too big.

#### **7. WHEN MY DOG WEARS THE NORMAL SNOOT OPTIVIZOR, THE FURS IS PRESSED INTO ITS EYES.**

Incidentally, the Short Snout Optivizor can also be quite suitable for dogs with a normal snout, especially if they have a lot of fur in their face. For this version leaves more space around the eyes - so the coat is not pressed into the eyes.

#### **8. THE HEADREST IS TOO HIGH UP ON THE HEAD**

This happens especially with Basset, Irish Setter or Cocker Spaniel. The Optivizor is pulled backwards by the deep-set ears. At the same time the front edge comes up very high and far above the nose. You can adjust the side straps to help ensure a proper fit.

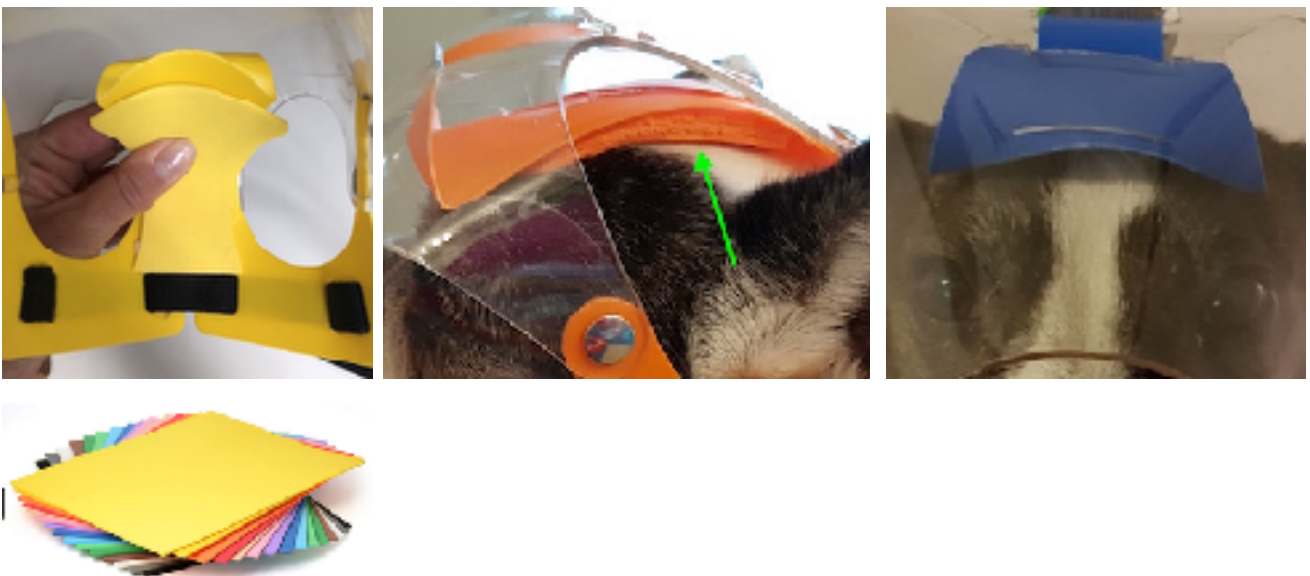


## 9. THE HEADREST IS TOO CLOSE TO THE EYEBROWS



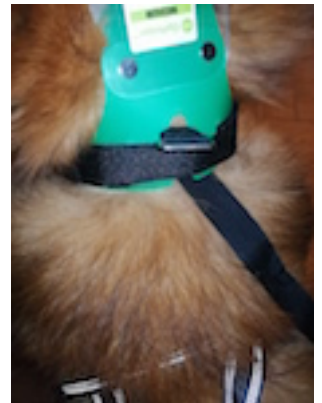
If a dog has a relatively short forehead, the headrest is often too close to or even right above the eyebrows. This will also happen if the mask is half a size too big or if the eye is very swollen.

Pad the headrest with some foam rubber (DINA4 or DINA5 sheet 1-2mm thick) from a stationery / craft / DIY shop. Cut the foam rubber according to the headrest shape from the very back (see photo).



## 10. THE OPTIVIZOR FITS WELL BUT MY DOG CAN PULL IT OUT

This especially happens with short snout dogs, long snout dogs (racing hounds) or mixed breed where the thickness of the neck is similar to the skull. You can tie the Optivizor to the harness of your dog to prevent this.



## ADDITIONAL NOTES FOR SHORT SNOOT DOG

In addition to the above criteria the following should be noted for dogs with a short snout.

The mask is not wider than her head, the headrest is centered on the forehead between the eyes and ears. The nose opening leaves her enough space to breathe and sniff, whereas the outer edge of the mask is "floating" before Joy's face.

Here you can see better that the outer edge of the Provizor almost "floats" in front of the face, as she has no nose bridge to rest on. The distance to the eyes is wide enough so that the Provizor does not touch the wound.





The ears have enough space in the opening provided and she can hear without problems.



The Optivizor does not touch the nose but similarly floats, ending right at the nose.



Leo uses the PVC nose piece . It rests on his nose bridge and provides the needed extra support. From the side you can see the nose bridge even better: It is a snug fit and keeps the Optivizor in a stable position. Nothing wobbles. The holes for the ears are large enough and at the same time ensures good ventilation. This Optivizor Eye protection fits Leo like a glove!



In this photo of taken from above you can see very well that the Optivizor leaves sufficient space in front of the forehead, so that the eyes are not in contact with it. Also around the ears Max has enough space so that they can stand up and not be kinked.





Although the nose piece rests well and the Optimizor has enough distance from his eyes, Max did not like the nose piece - he would rather go without. The nose piece was off and also cut back the outer rim was cut back a little. Now there is more space around the nose and Max feels well again. From the side, Max has plenty of room for his eyes. Also the Optimizor doesn't interfere around the ears as the cutout are large enough.



## SPECIFIC FAQ FOR SHORT SNOUT

### 1. THE SHORT SNOUTED OPTIVIZOR FITS TOO CLOSE TO THE EYES.



The short snout Optimizor only fits when the head is "not too deep", meaning the distance between the forehead and neck (as shown in this photo by the long arrow) is not too long. If the head is too deep, then the Optimizor will sit too close to the eyes and/or touch them. Here, the small red arrows indicate that the distance at Max is correct. The headrest correctly sits on the middle of his forehead.

If a dog with a short snout (e.g. Pug, Bulldog, Boxer, etc.) has a very "deep" head (a large distance between the forehead and neck as noted above), then the Short Snouts Optimizor often sits too close to the eyes and therefore does not fit. The Optimizor must not touch the eyes. In that case, the Optimizor for Normal Snouts can be used.



These Bulldogs have "deep" heads, that is, the distance from forehead to neck is very long, as you can see well in these photos. If this is the case, the Optimizor does not fit the short snout dog, because it is too close to the eyes. This is not only uncomfortable, but can make things worse.

In this case, the Normal Snout Optivizor may fit better. The front needs to be cut quite heavily (see dotted line) and still reliably protect the eyes.

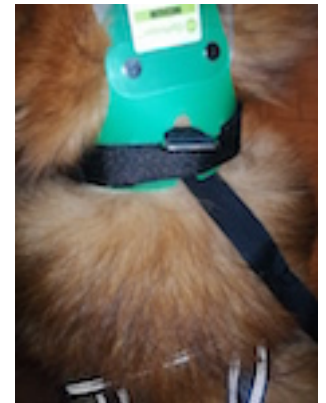
Warning: Do NOT cut to the tip of the dog's snout, because then there is too much space between the nose and the vizor's edge. The eyes would not be sufficiently protected when sniffing outdoors.



## 2. THE SHORT SNOURED OPTIVIZOR KEEP SLIDING FORWARD

Short snouted dogs often have identical circumferences of head and neck (thick neck). Because to this, they easily can slip off the mask even if you tighten the neck strap tightly. In this case, you can attach the Optivizor to the harness.

If desired, you can attach the mask with additional 2-sided velcro at the dog's own collar. To do this, look into the inside of the mask; you will see two additional slots for the velcro in the coloured area of the neck piece. Put the velcro through these slots and attach it to the dog's collar.





### **3. DOG DON'T HAVE NOSE BRIDGE (ALSO WITH CATS)**

Cut out the nose bride and adjust/shorten the edge of the Optivizor.

### **4. DOG DON'T LIKE THE FEEL OF THE STRAP NOSE BRIDGE.**

Cut out the nose bride and adjust/shorten the edge of the Optivizor

### **5. THE NOSE BRIDGE STRAP IS TOO LONG**

Cut out the nose bride and adjust/shorten the edge of the Optivizor.

